



OFFSET ROUND PULL HANDLE 61019SM ENTRANCE HANDLE (OA) 2000MM X 32MM

DETAILS

PRODUCT CODE

61019SM18532SSS

DIMENSIONS

A-1850mm, B-32mm, C-45mm, D-2000mm, E-25

DOOR THICKNESS

Glass Max 15mm - Timber/Metal
Max 55mm

FIXING

Back to Back or Single Fixing to Suit
Timber or Glass Doors

MATERIAL

304 Grade Stainless Steel

OVERALL DIAMETER

32mm

PRODUCT SERIES

Offset Round Pull Handle

WARRANTIES

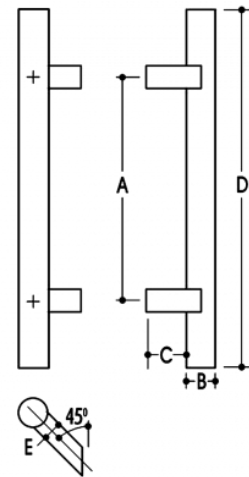
25 Years Mechanical

DESCRIPTION

Staight Pull with 25mm Square 45
Degree Mitred/Offset Standoffs

NOTES

Product code identifies as BTB SSS
finish



FINISHES

Satin Stainless Steel (SSS)

Polished Stainless Steel (PSS)