



## F SQUARE ROSE DOOR FURNITURE HOSPITAL TURNSNIB INDICATING

### DETAILS

**PRODUCT CODE**

F06HI

**DIMENSIONS**

50mm x 50mm

**FIXING**

Concealed

**HANDING**

Non-Handed

**MATERIAL**

304 Grade Stainless Steel

**OVERALL THICKNESS**

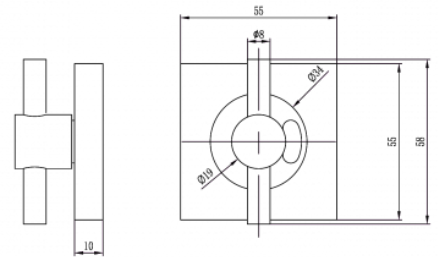
10mm

**PRODUCT SERIES**

F Square Rose Door Furniture

**WARRANTIES**

25 Years Mechanical



### FINISHES

Polished Stainless Steel (PSS)

Satin Black (SBL)

Satin Antique Bronze (SABZ)

Satin Stainless Steel (SSS)

Gun Metal (GM)

Satin Gold (SG)

### CERTIFICATIONS

