

NOVAS



NOVAS IN WALL CISTERN W/BACKET DUAL FLUSH

DETAILS

PRODUCT CODE

BR-IWC

DIMENSIONS

590mm x 1140mm

INSTALLATION TYPE

In Wall Cistern

MATERIAL

ABS

PRODUCT SERIES

Novas

WELS RATING

4.5/3L 4 Star

WARRANTIES

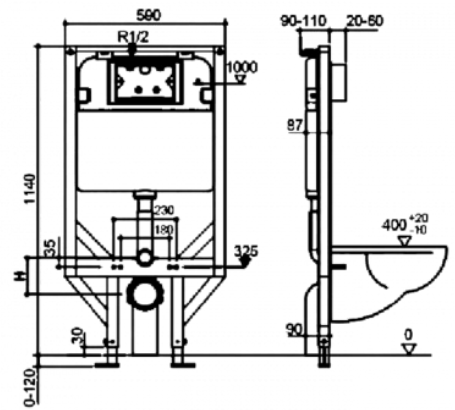
10/3 Years

DESCRIPTION

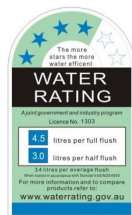
WELS Registration no. L02631

NOTES

Flush pipe, key seal & fixings included, Push Plate Sold Separately



CERTIFICATIONS

**WaterMark**Quality
Endorsed
Company
ISO 9001