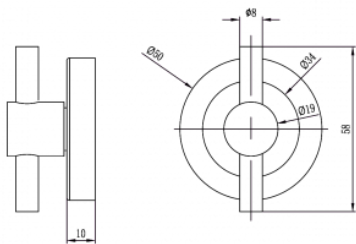




B ROUND ROSE DOOR FURNITURE HOSPITAL TURNSNIB

DETAILS

<b>PRODUCT CODE</b> B06HSSS	<b>OVERALL DIAMETER</b> 50mm
<b>FIXING</b> Concealed	<b>OVERALL THICKNESS</b> 10mm
<b>HANDING</b> Non-Handed	<b>PRODUCT SERIES</b> B Round Rose Door Furniture
<b>MATERIAL</b> 304 Grade Stainless Steel	<b>WARRANTIES</b> 25 Years Mechanical
	<b>NOTES</b> Product code identifies SSS finish



FINISHES

- Polished Stainless Steel (PSS)
- Satin Black (SBL)
- Satin Antique Bronze (SABZ)
- Satin Antique Brass (SAB)
- Satin Stainless Steel (SSS)
- Gun Metal (GM)
- Satin Nickel (SN)
- Satin Gold (SG)
- Polished Gold (PGL)

CERTIFICATIONS

